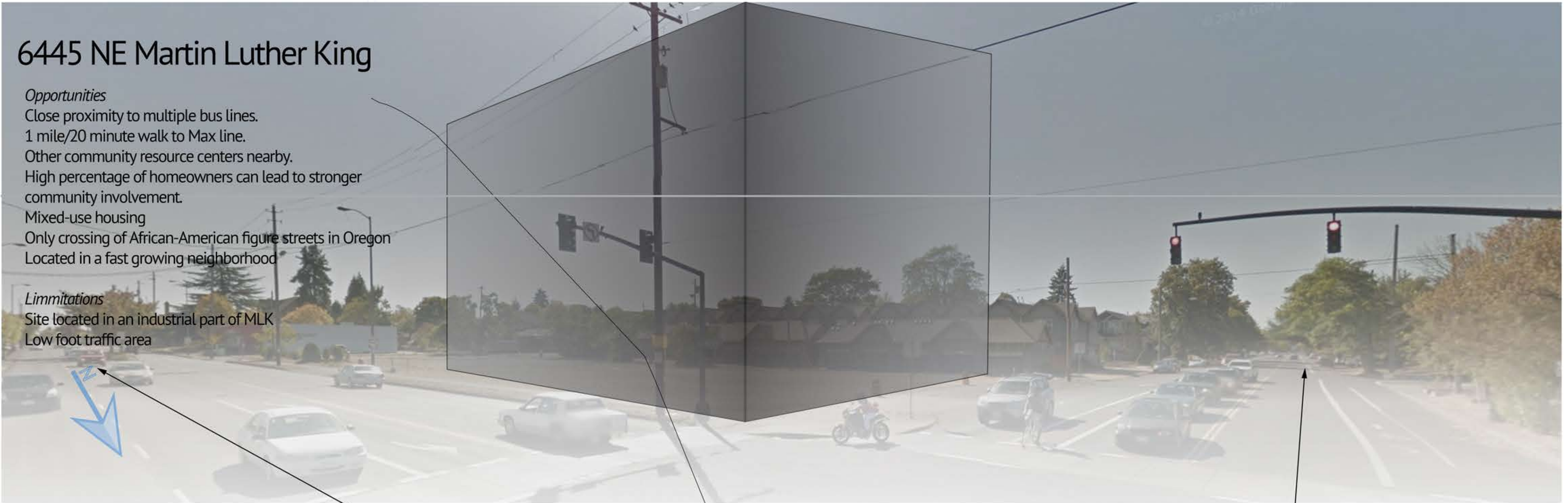


A PLACE TO BE

6445 NE Martin Luther King

Opportunities
 Close proximity to multiple bus lines.
 1 mile/20 minute walk to Max line.
 Other community resource centers nearby.
 High percentage of homeowners can lead to stronger community involvement.
 Mixed-use housing
 Only crossing of African-American figure streets in Oregon
 Located in a fast growing neighborhood

Limitations
 Site located in an industrial part of MLK
 Low foot traffic area



Zone

Mixed Commercial/Residential zone (CM) with (d) and (h) overlay

Max height: 45 ft

Min Setback: 0

Max setback: 10 ft

Building coverage: min 50% of site area

FAR: 3 to one

Min window area: The windows must be at least 50 percent of the length and 25 percent of the ground level wall area.

Martin Luther King Jr Blvd

Rosa Parks Way

Race Distribution

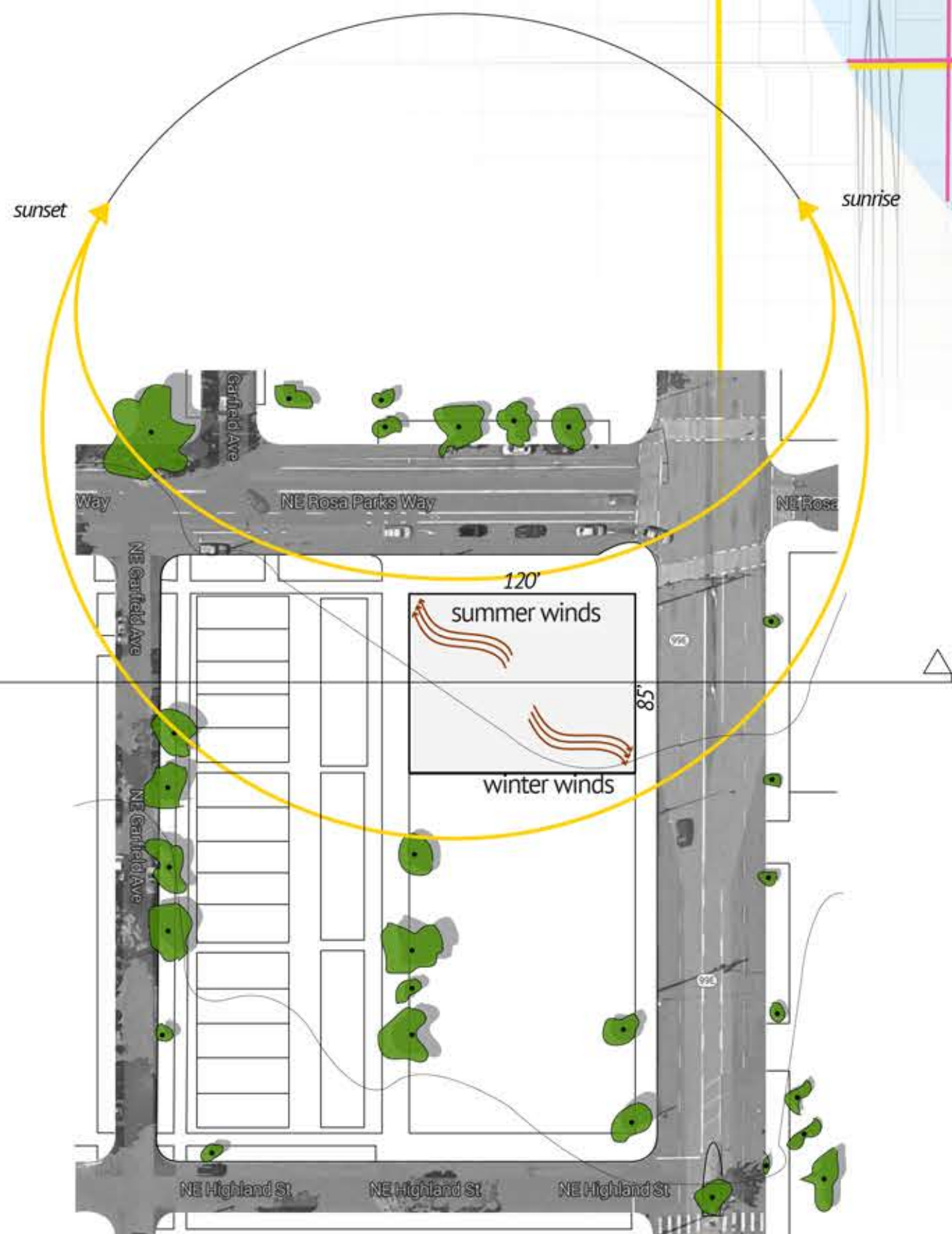
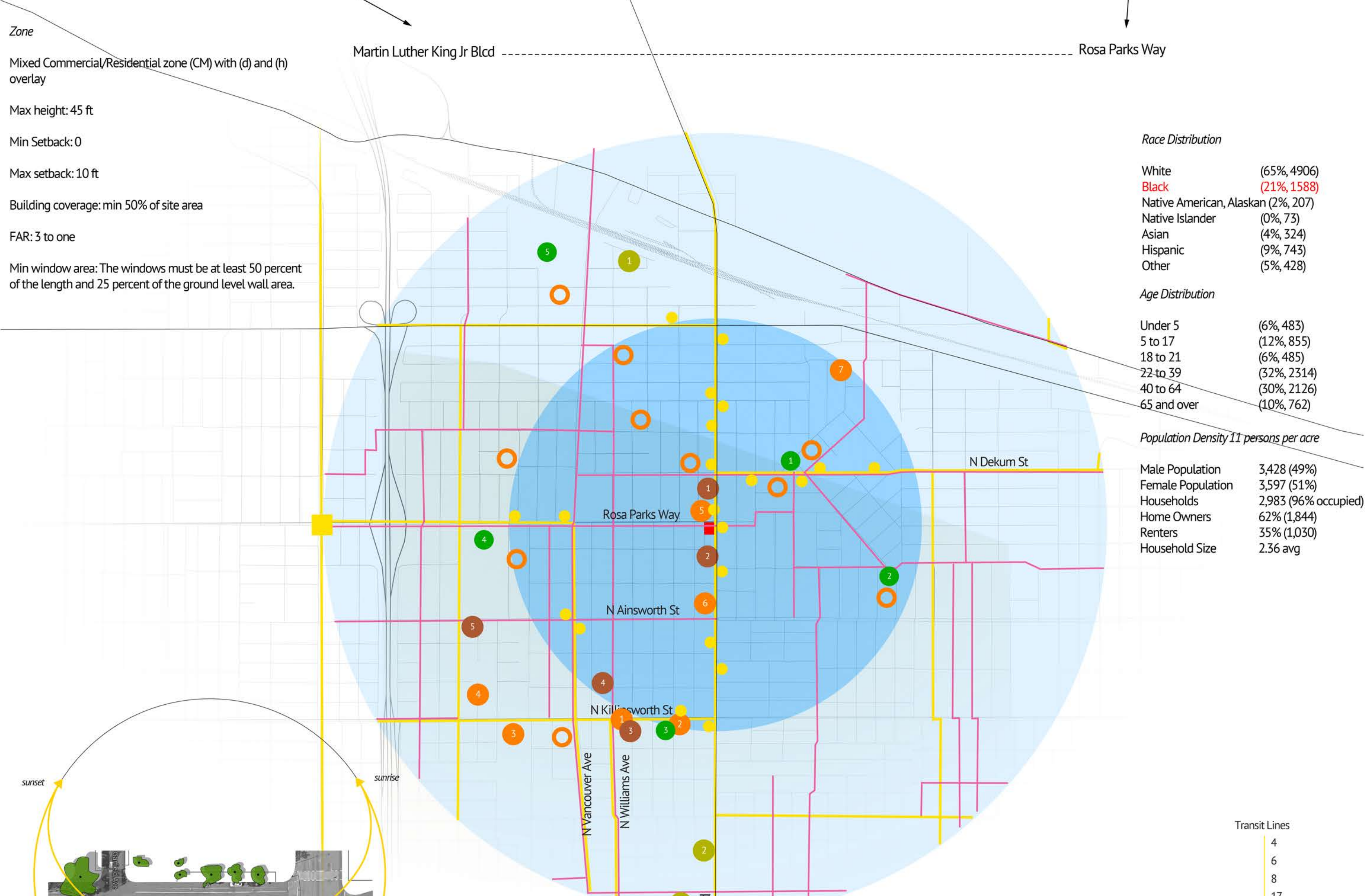
White	(65%, 4906)
Black	(21%, 1588)
Native American, Alaskan	(2%, 207)
Native Islander	(0%, 73)
Asian	(4%, 324)
Hispanic	(9%, 743)
Other	(5%, 428)

Age Distribution

Under 5	(6%, 483)
5 to 17	(12%, 855)
18 to 21	(6%, 485)
22 to 39	(32%, 2314)
40 to 64	(30%, 2126)
65 and over	(10%, 762)

Population Density 11 persons per acre

Male Population	3,428 (49%)
Female Population	3,597 (51%)
Households	2,983 (96% occupied)
Home Owners	62% (1,844)
Renters	35% (1,030)
Household Size	2.36 avg



—	bus route
—	bike route
●	bus stop
■	MAX yellow line
○	1.0 mile radius/20 min walk
○	0.5 mile radius/10 min walk
—	Transit

- Pre-school/Childcare
- 1 Ethos Music Center
- 2 Rose City Ballet School
- 3 Jefferson High School
- 4 PCC
- 5 Growing Seeds North
- 6 Ninja School
- 7 Woodlawn School

- 1 Water In The Desert
- 2 Curious Comedy Theater
- 2 Alberta Abbey

- 1 Oregon Action
- 2 Portland Community Reinvestment Initiatives
- 3 In Other Words Feminist Community Center
- 4 Muslim Community Center of Portland
- 5 June Key Delta Community Center

- 1 Woodlawn Park
- 2 Holman Park
- 3 Mallory Meadows Park
- 4 Peninsula Park
- 5 Farragut City Park

Destination	Transit	MAX Yellow Line	Bike
Airport	14 min	56 min	36 min
Gateway TC	15 min	38 min	43 min
Historic Vanport	9 min	45 min	26 min
Union Station	9 min	30 min	23 min
Downtown Portland	12 min	25 min	33 min

Community Institutions	Educational Institutions	Nearby Parks
1 Oregon Action	1 Woodlawn Park	0.46mi 7.72 acres
2 Portland Community Reinvestment Initiatives	2 Holman Park	0.66mi 0.13 acres
3 In Other Words Feminist Community Center	3 Mallory Meadows Park	0.71mi 0.15 acres
4 Muslim Community Center of Portland	4 Peninsula Park	0.74mi 16.34 acres
5 June Key Delta Community Center	5 Farragut City Park	1.1mi

A PLACE TO BE

CULTURAL ARTS CENTER ROSA PARKS WAY & MLK

TASK SCOPE
GOALS / EMPOWERMENT / SPATIAL INTENTIONS / ADJACENCIES



Empowerment through connectivity and mentorship.

Cultural Arts Mentorship: Create connections for mentorship with artists at the local, national, and global level.



Empowerment through performance arts.

Performance Art Space: Create a space for cultural performance arts, from the historical Jumptown Jazz scene to contemporary movements in dance and music.



Empowerment through cultural arts.

Gallery Exhibition Space: Create a space dedicated to supporting black cultural arts, emphasizing intersections between historical and contemporary arts.

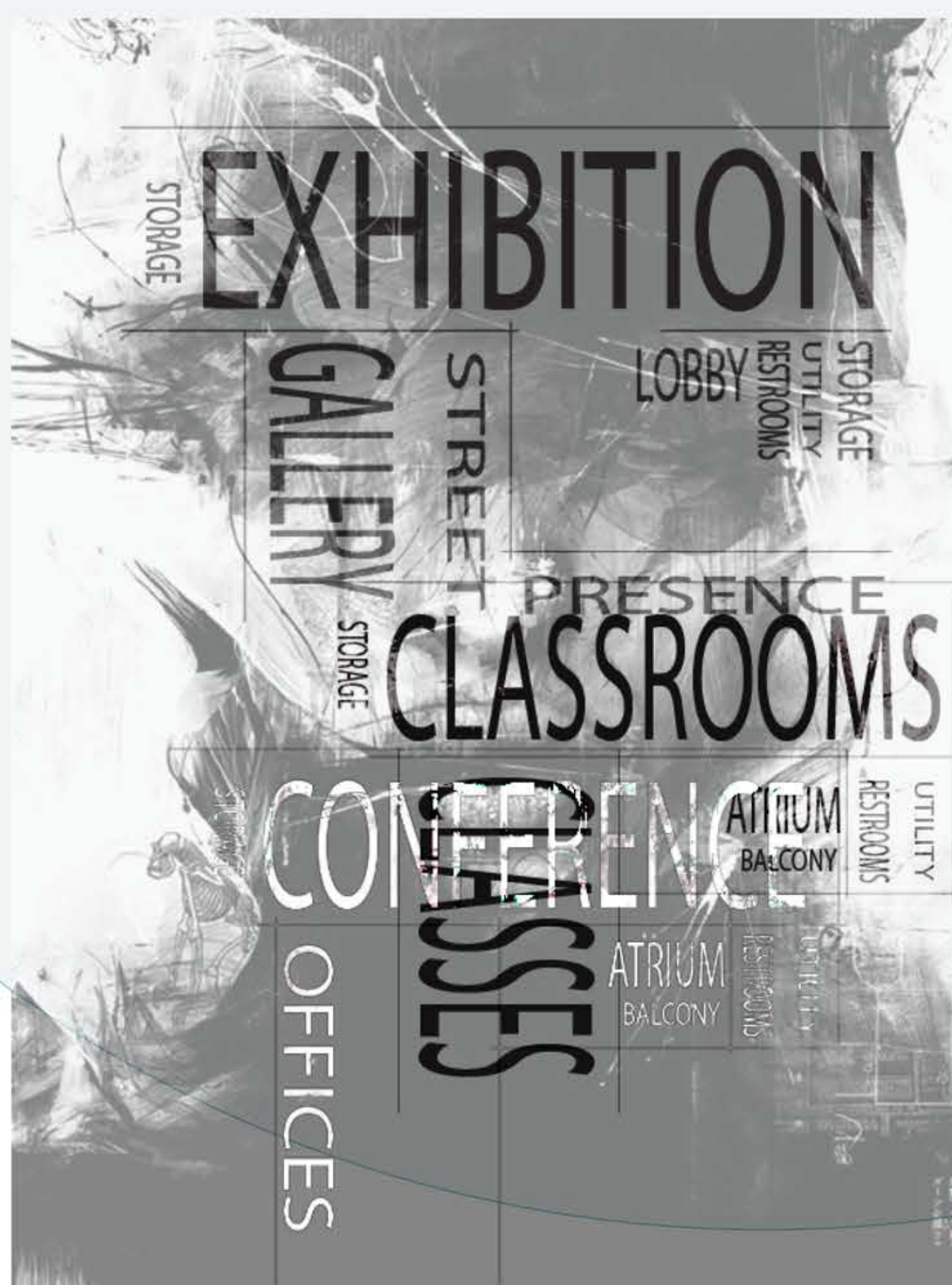


Empowerment through digital and graphic arts education.

Create a space dedicated to providing the tools and high tech resources to support and foster contemporary digital and graphics arts education and creation.

Goals
60,000 ft² Cultural Arts Center in East Portland

- Educational Services 
- Arts Facilities 
- Technology Resource 
- Community Engagement 



Arts Mentoring Environment: Create a facility dedicated to supporting and promoting the arts from the historical NE Portland scene, to the modern-day context.



Learning Environment: Create opportunities for learning and provide resources for the fine arts and computer graphics arts.



Community Environment: Create opportunities for engaging the community through art exhibitions and through music and dance performance space.

CULTURAL ARTS CENTER ROSA PARKS WAY & MLK

PRECEDENCES
RESPONDING TO THE NEEDS OF EACH UNIQUE PROGRAM WITHIN



**STEVEN HOLL
GLASGOW SCHOOL OF ART**
The positioning and abundance of glazing in these spaces support an abundance of bright, indirect natural light. This is achieved with skylights and clerestory windows, that direct the light in without the glare from direct light on work surfaces.
The open studios design offers a subtle suggestion of room division and encourages cooperative learning experiences.

**STEVEN HOLL
THE NELSON-ATKINS MUSEUM
OF ART GALLERY**
The length, width, and height of Holl's precedent would maximize the square footage and proportions of this site and provide a sheltered, center courtyard to engage the community.



**STEVEN HOLL
INSTITUTE OF CONTEMPORARY ART**
The geometries of Holl's art institute provide hierarchy for a main entrance, and suggests an gaze toward the Rosa Parks Way & MLK intersections, the only crossroad in Portland named after two black historical figures.
The varying surface treatments from transparent, to translucent, and to opaque invites a variety of programming within the prominent corner of the structure.

**STEVEN HOLL
KIASMA MUSEUM OF
CONTEMPORARY ART
HELSINKI FINLAND**
The two lengthwise segments of the structure provide a lightwell, bringing natural sunlight through the building's core to all spaces within.



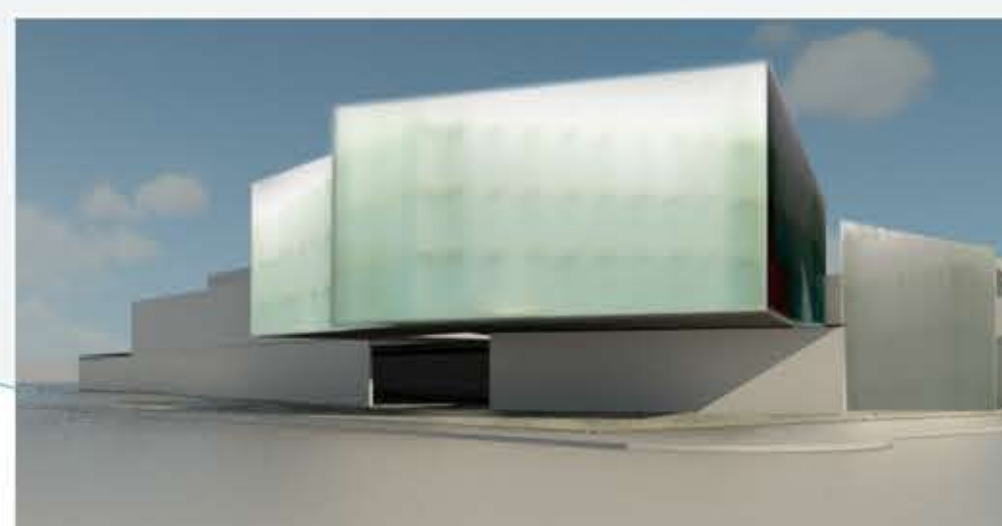
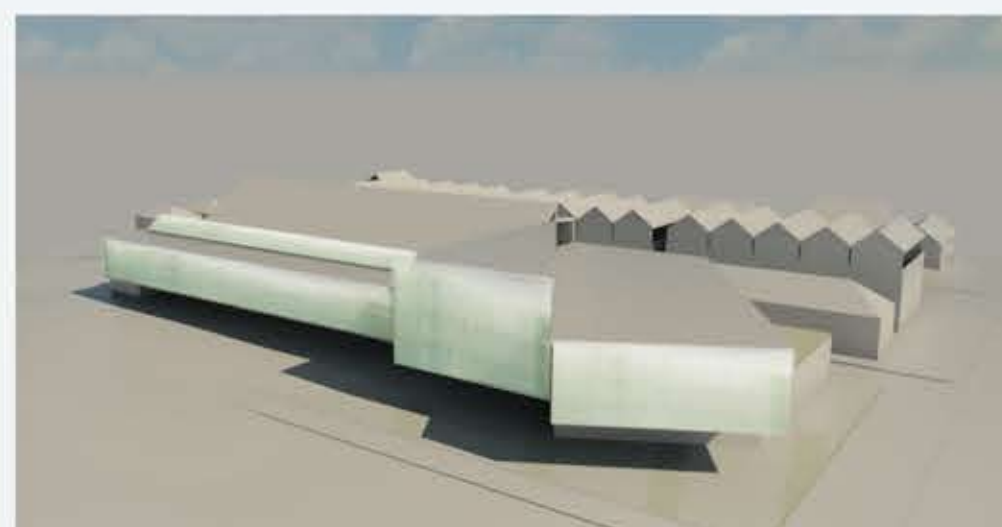
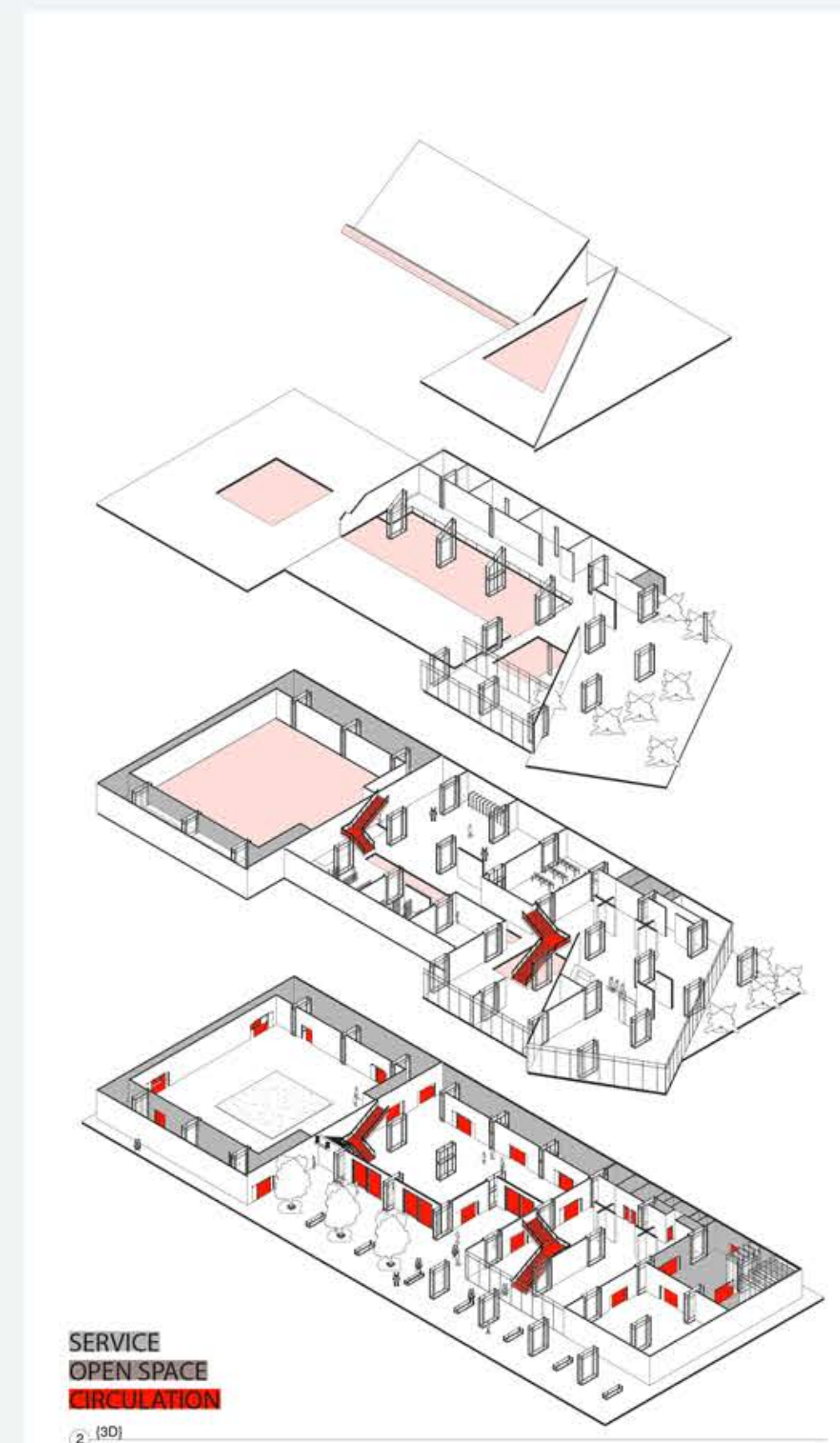
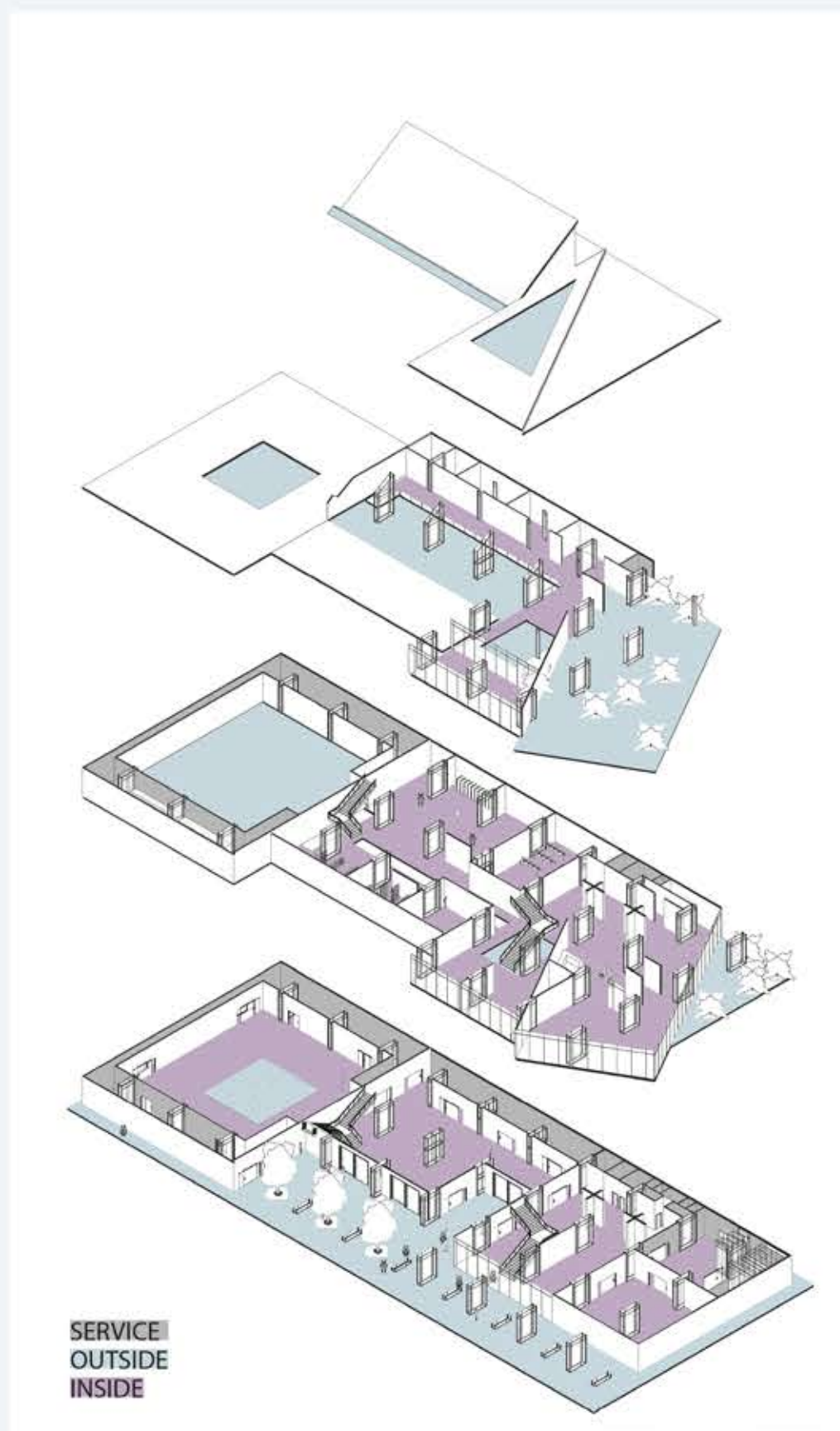
**MILO SMITH BLACK BOX
THEATER: CENTRAL
WASHINGTON**
An intimate, in the round, performance space with a flexible, collapsible seating system that can shift to change the room's configuration in response to the needs of the event or be stored in the wings to open the floor space for festivals and dances.

**EHRlich ARCHITECTS
UNIVERSITY OF CALIFORNIA
IRVINE CONTEMPORARY ARTS
CENTER**
This flexible, ground-floor space can provide a dance studio, music hall, exhibition & event space, and assembly hall.
The right wing can connect to changing rooms and the left wing can open to the outdoor courtyard during receptions.



**STEVEN HOLL
VANKE CENTER**
Colossal pillars that provide illumination while housing the building's structural members in a configuration that defines and sections interior spaces; and that are large enough to provide indoor and outdoor gallery showcases for 2D, 3D, and digital graphics and film art.

MASSING STUDIES DEFINING THE SPACE

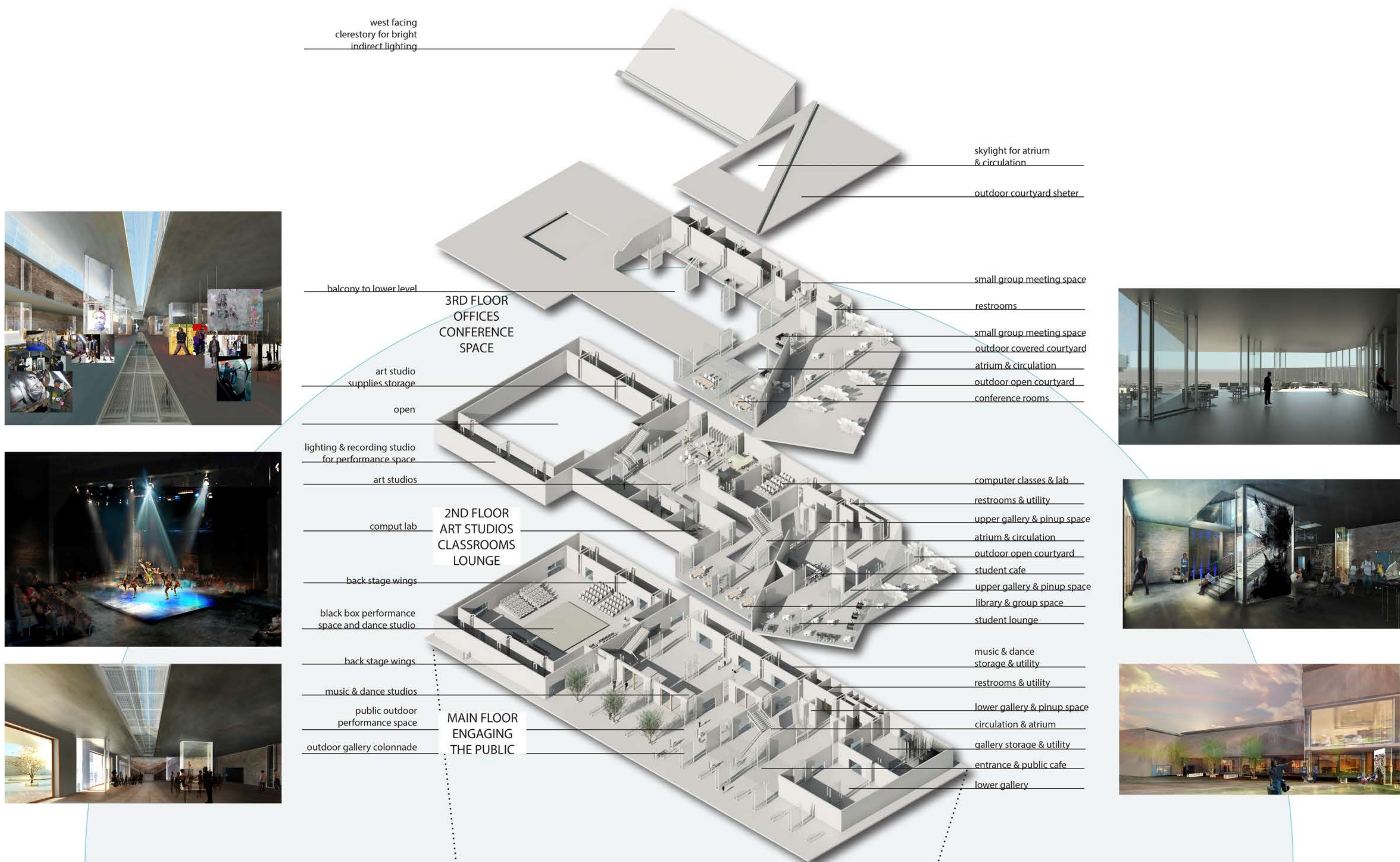


A PLACE TO BE

CULTURAL ARTS CENTER ROSA PARKS WAY & MLK

PROGRAMMING SPACE

COMMUNITY ENGAGEMENT, OPPORTUNITIES FOR ART INSTRUCTION AND MENTORSHIP
SPACE FOR CREATING AND SHOWING ART AND FOR PARTICIPATING IN PERFORMANCE ART



PORTLAND'S BLACK BOX CULTURAL ART CENTER IS THE CATALYST PROJECT THAT LAYS CLAIM TO THE CORNER OF NE ROSA PARKS WAY & MARTIN LUTHER KING JR. BLVD—THE UNIQUE CROSSROAD FOR THE ONLY TWO STREETS IN PORTLAND OREGON NAMED AFTER PROMINENT FIGURES IN BLACK HISTORY.

ARTS AND CRAFTS CAMPUS
TO EXPAND THE BLACK BOX TO CRAFT, TEXTILES, AND SCULPTURE FOR GREATER DEPTH AND DIMENSION IN THE ARTS



Future Site for Arts & Crafts Campus



Future Site for Magnet Arts School



Future Site for Health & Wellness Center



Future Site for Black Historic Museum

MAGNET ARTS SCHOOL
A NATURAL PROGRESSION TO ENHANCE AND STRENGTHEN BLACK CULTURAL ARTS

HEALTH AND WELLNESS CENTER
A PLACE OF HEALING, MEDITATION, AND AND REFRESHING THE SOUL

THE BLACK HISTORY MUSEUM
PLACED DIAGONALLY ACROSS THE INTERSECTION FOR A DIALOG BETWEEN THE TWO CORE STRUCTURES

A PLACE TO BE

CULTURAL ARTS CENTER

ROSA PARKS WAY & MLK

TELLING THE STORY

COMMUNITY ENGAGEMENT THROUGH PERFORMANCE EVENTS, LECTURE SERIES, AND GALLERY EXHIBITIONS.

OPPORTUNITIES FOR ART INSTRUCTION AND MENTORSHIP THROUGH:

- * STUDIO ART CLASSES
- * DIGITAL FILM AND GRAPHIC DESIGN COURSES
- * THEATRICAL ARTS
- * MUSIC AND DANCE FROM JUMPTOWN JAZZ TO CONTEMPORARY HIP HOP.

