

A PLACE

STORY
VOICE

TO BE

TO TELL

TO HEAR



Community Goals | Street Arts Space

Blazers Boys and Girls Club | Intisar Abioto of The Black Portlanders



Story Telling

Storytelling has historically been an important event in communities, through which questions are answered, and lifelong lessons are learned. New stories are always being made, with unique power to engage people in the process of its creation. It illuminates certain experiences and is an important piece to any community development.



Individual Identity

Providing a safe environment for self expression for individuals of African descent and to amplify their voices.



Community Building

Physical and artistic activities create opportunities for friendships and relationships to thrive, thus resulting in a stronger support network for members of the community.



Youth Safety

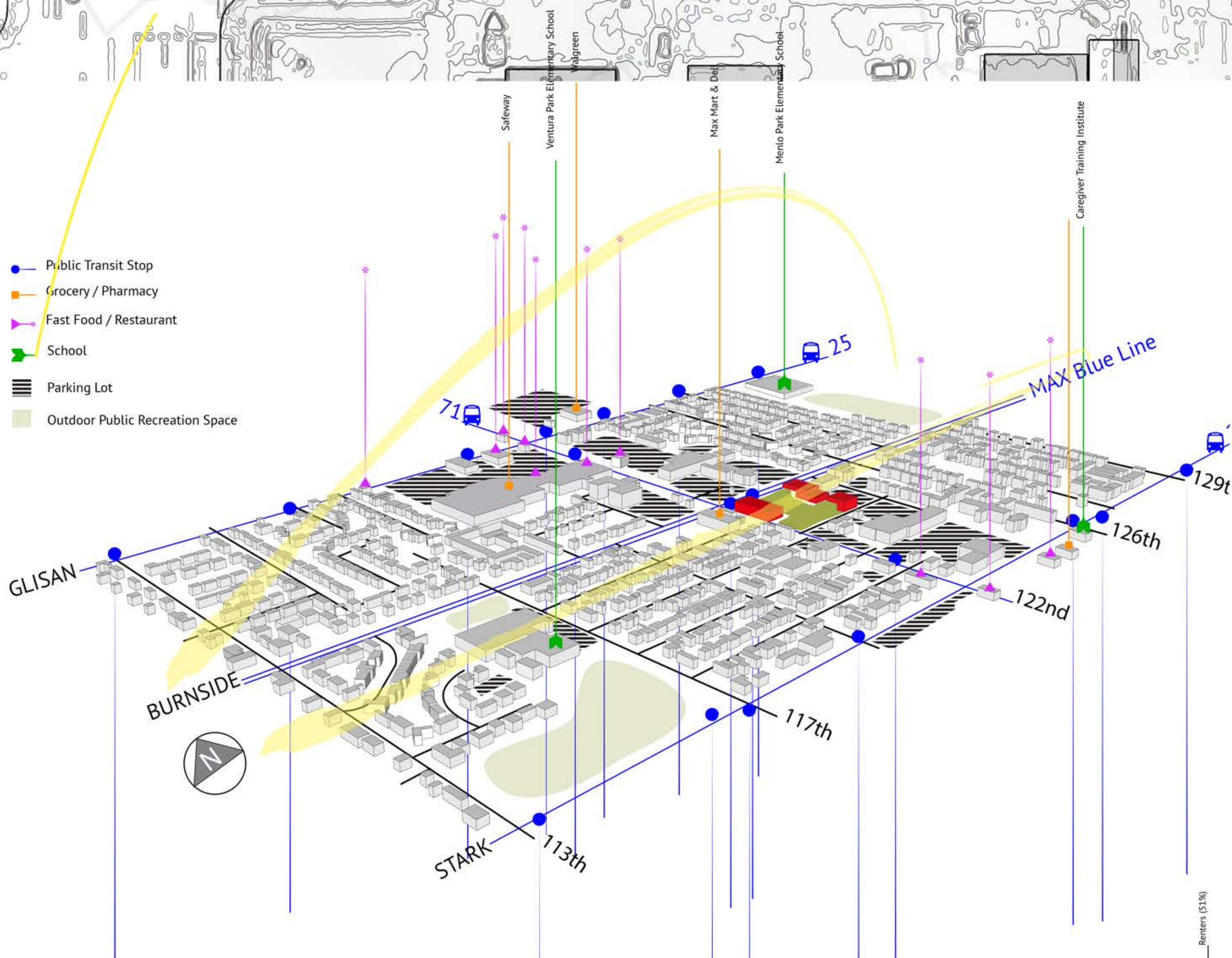
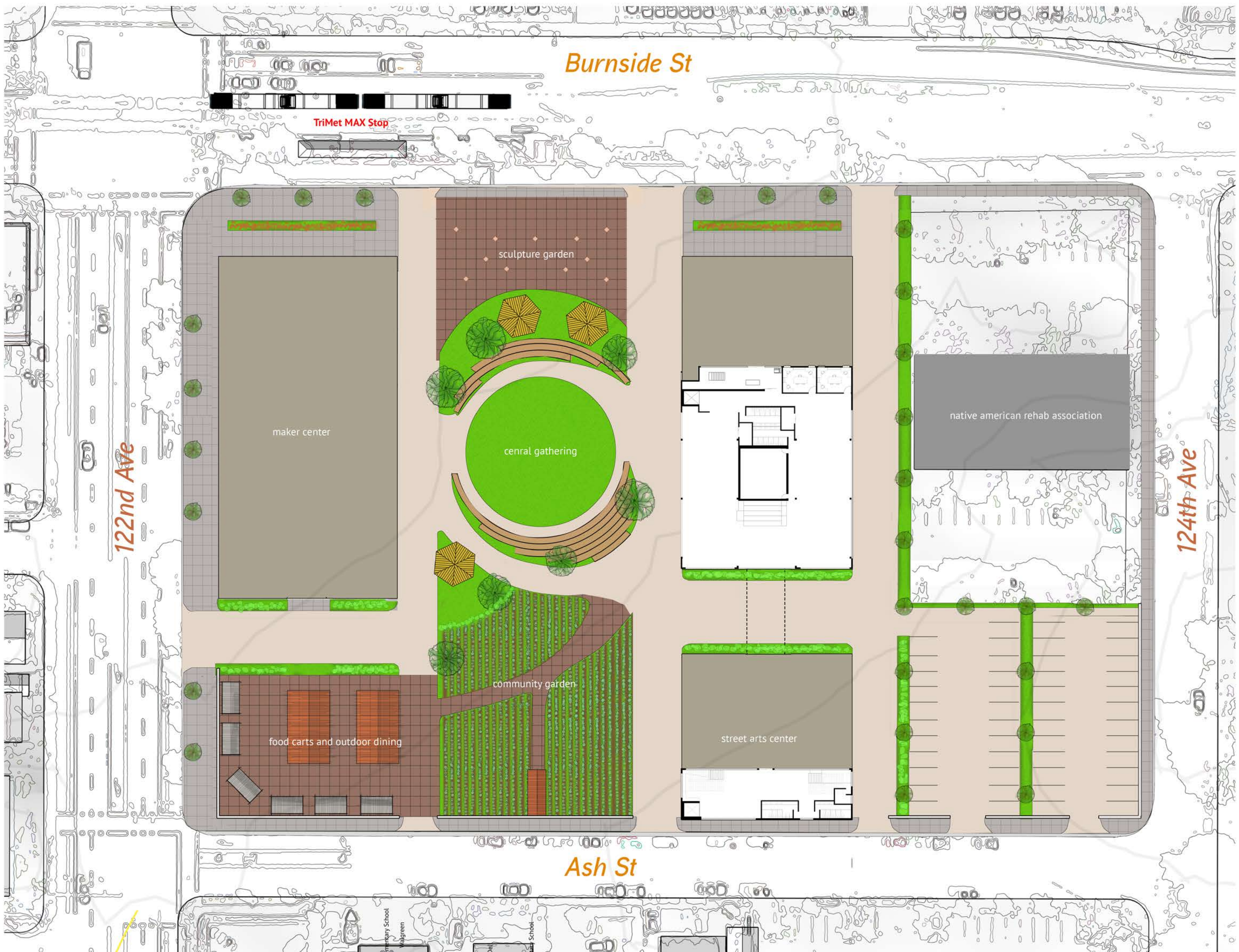
Ensuring the safety of young people by providing mentorship opportunities and a extracurricular activities.



Education

Utilizing art education to bridge the gap between academia and home.

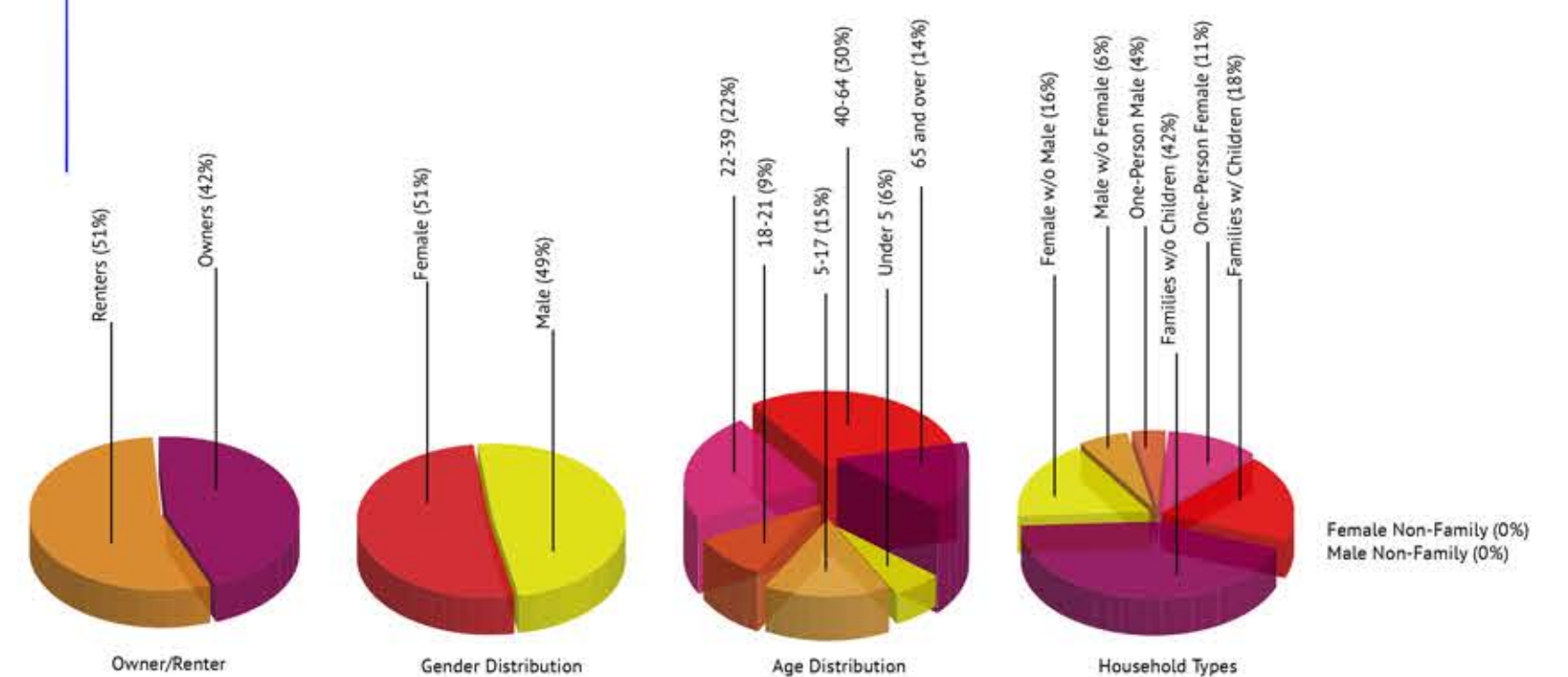
A PLACE TO BE STORY TO TELL VOICE TO HEAR



This site is currently owned by the City of Portland and used as a Park & Ride parking lot.

Despite easy access to Portland's central core by TriMet MAX line, the site on E Burnside and 122nd is psychologically removed from the urban fabric of the city. Increasing foot traffic and street activities and community connection will help individuals reconnecting with their city.

This proposal suggests utilizing the site for a Maker Space and a Street Arts Center with plenty of open, public space for the neighborhood to use and gather at.



A PLACE TO BE STORY VOICE TO TELL TO HEAR

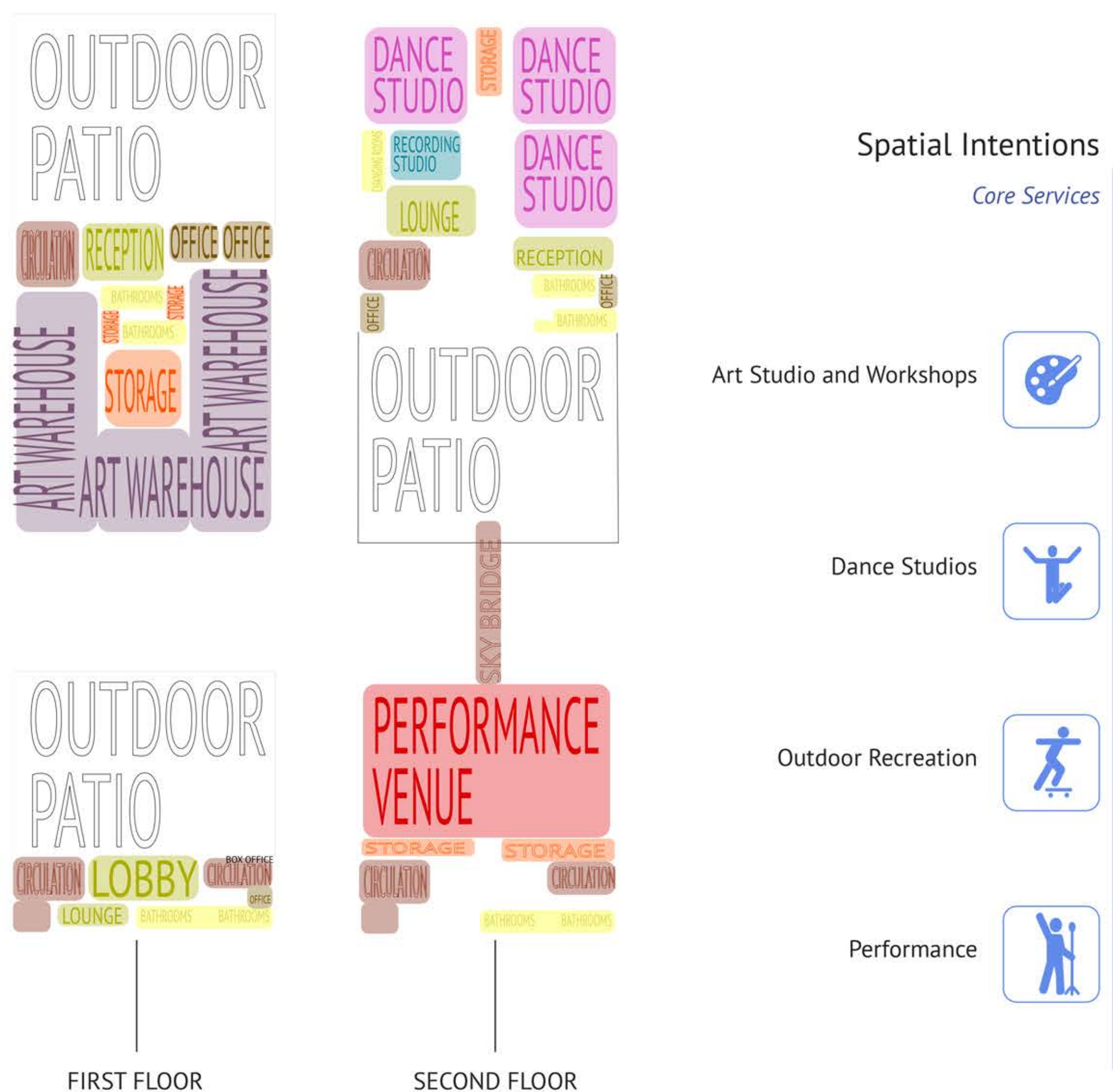


Perspective view on E Burnside Street

The center benefits from its immediate proximity to the Blue MAX line which provides services between Gresham and Hillsboro. It becomes a neighborhood icon and a desirable space for people of all ages to come together to learn skills in various fields of arts and levels of community engagement.

Outdoor gallery provides a space for the youth to use their artistic creativity and become visual activists. Graffiti expresses underlying social and political messages using hip-hop and b-boying culture. By providing a space for young people to visually voice their political voice, it increases the visibility of those opinions.

The image of the skateboarder as a rebellious, non-conforming youth has faded in recent years. The activity has become a way for young people to navigate their urban environment and paints a more diverse and controlled picture of skateboarding. Furthermore, as more professional skaters use hip hop, reggae, or hard rock music accompaniment in their videos, many urban youths, hip-hop fans, reggae fans, and hard rock fans are also drawn to skateboarding.



Outdoor recreation activities enhance social behavior, alleviate stress and provide opportunities for youth to build leadership skills within their community.



Art education strengthens collaboration, communication skills and problem solving abilities. It also equips students to be more expressive by providing a creative outlet and build a stronger sense of identity and confidence in their ability to affect the world around them in meaningful ways.



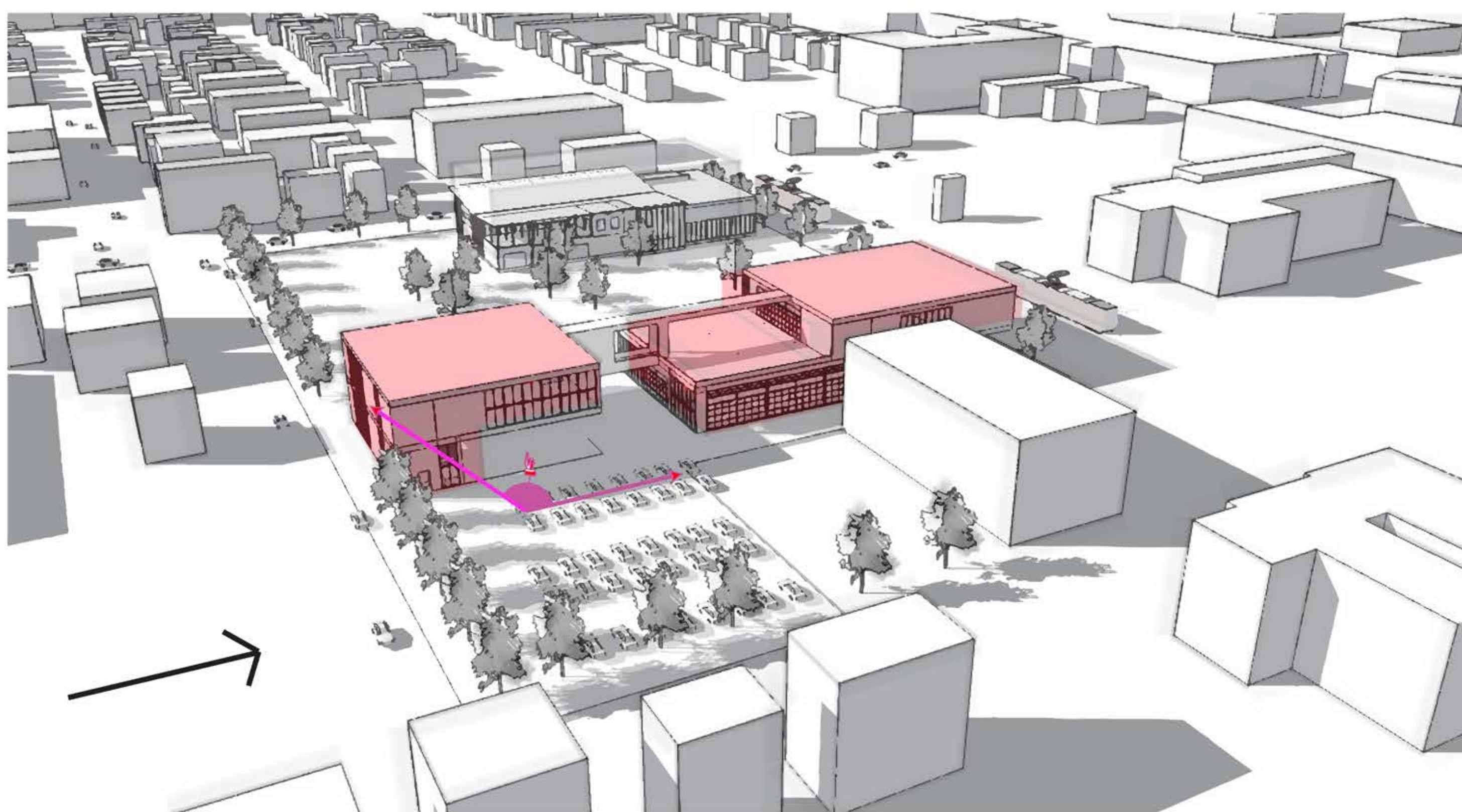
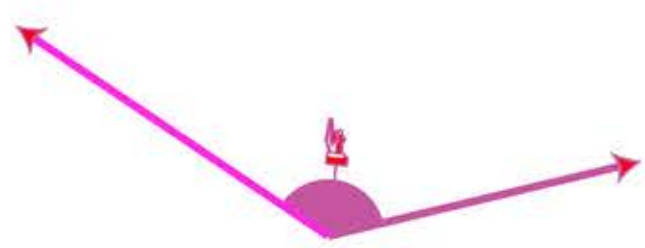
In addition to being a highly physical activity with significant health benefits, dancing is also a social activity that improves social and communication skills, and develops a sense of trust and cooperation among people of all ages while improving self-esteem, especially for the youth.



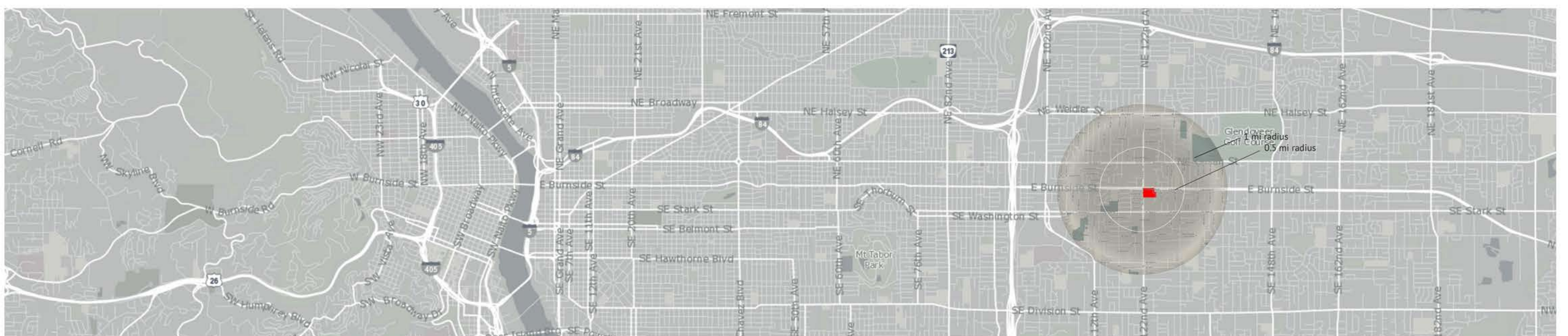
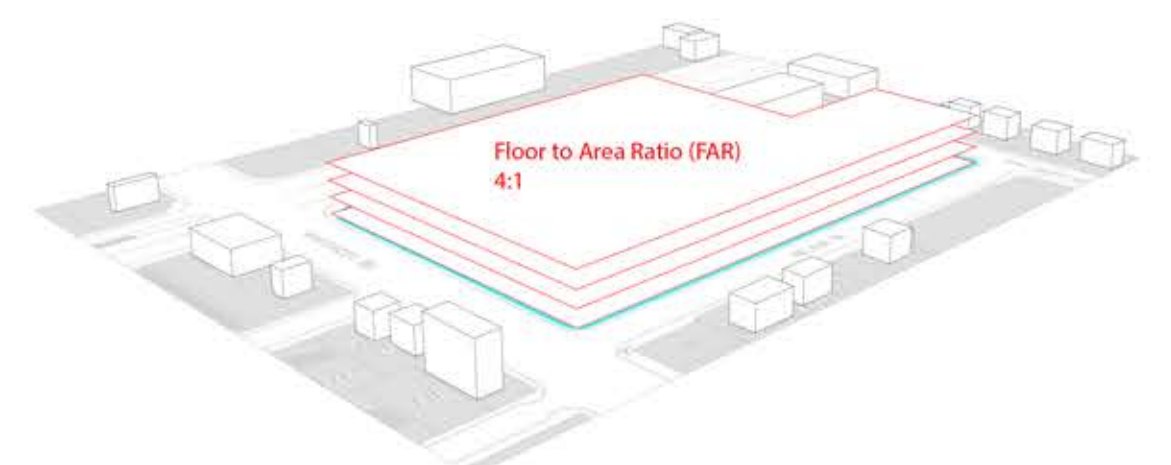
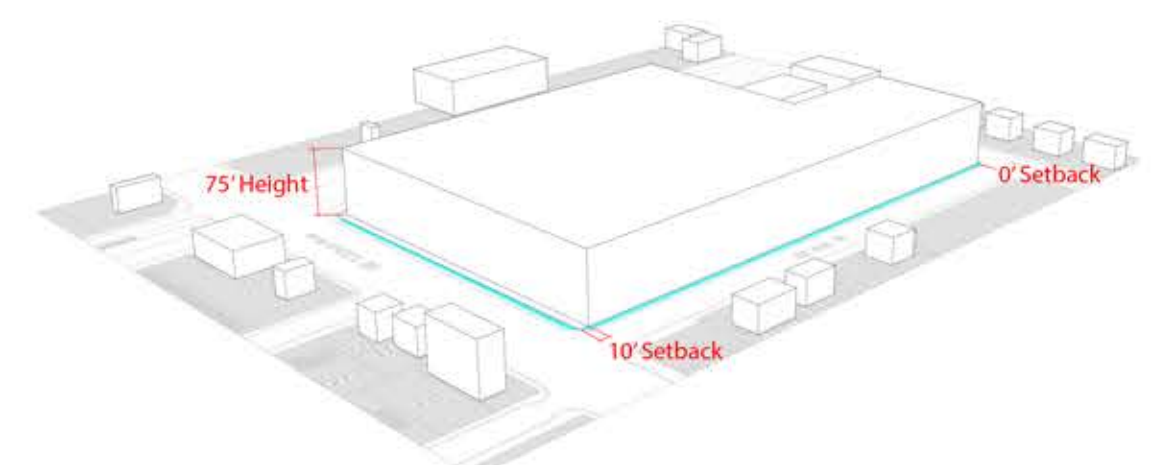
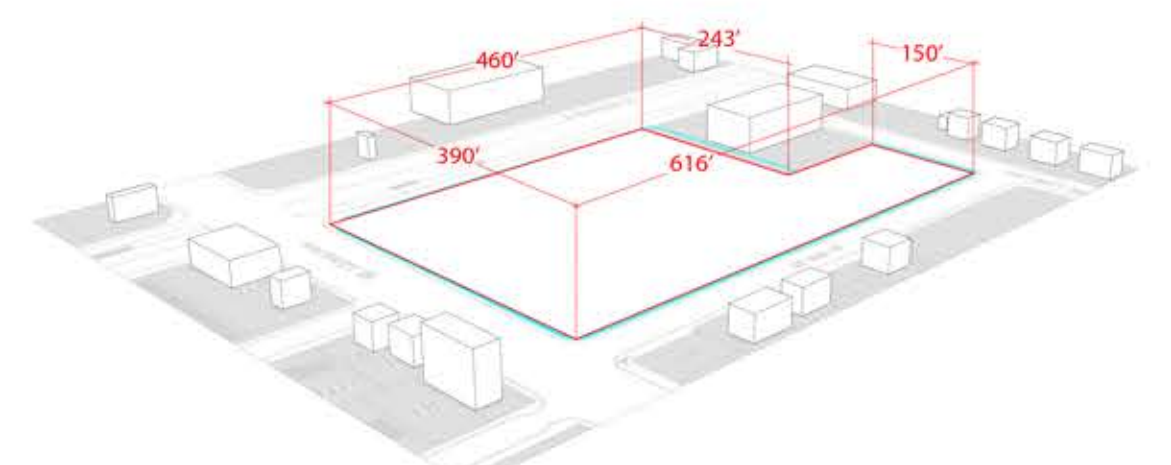
A PLACE TO BE STORY VOICE TO TELL TO HEAR



Perspective view from campus parking lot



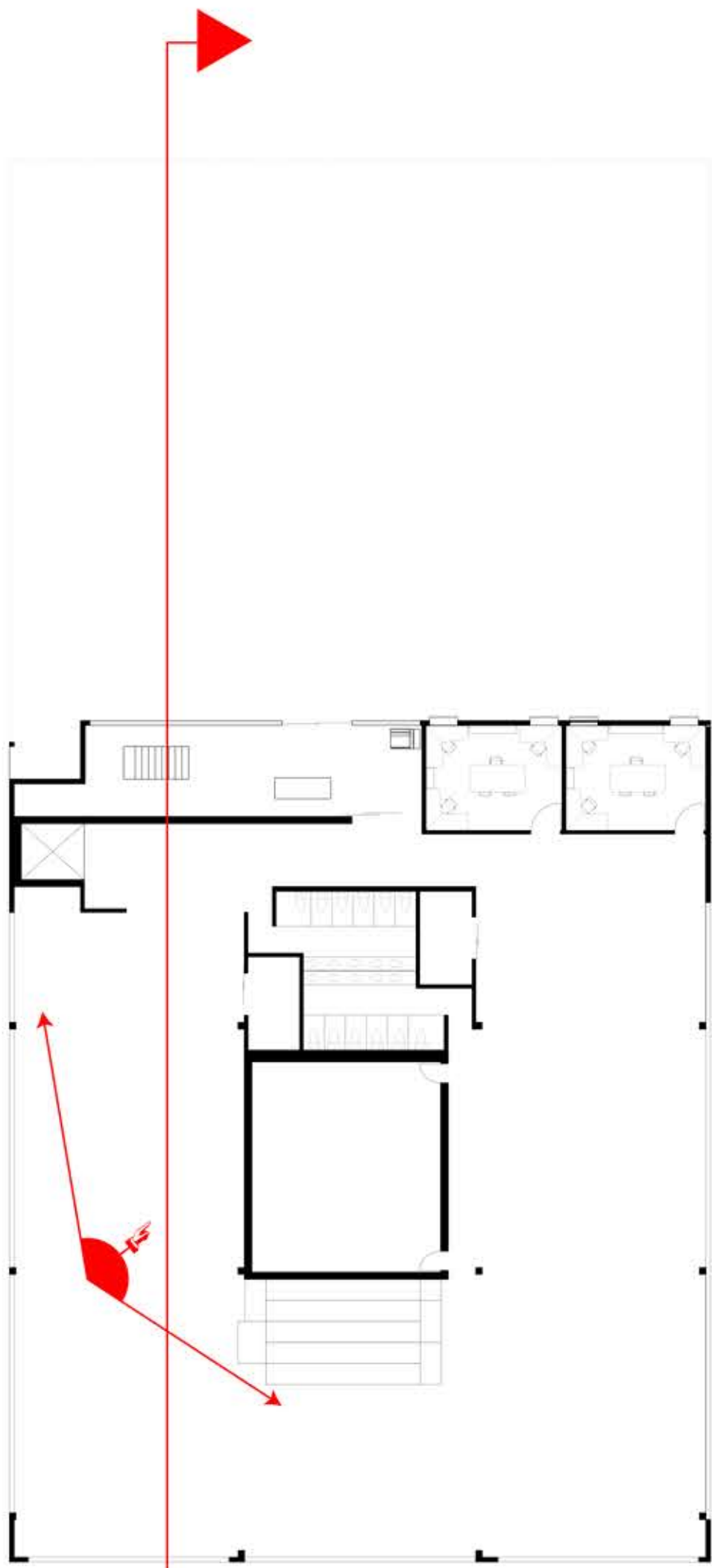
Neighborhood: Hazelwood
 Zoning: CX - Central Commercial
 Floor to Area Ratio (FAR): 4 to 1
 Max Height: 75'
 Min Setback: 10' on Transit Street
 Max



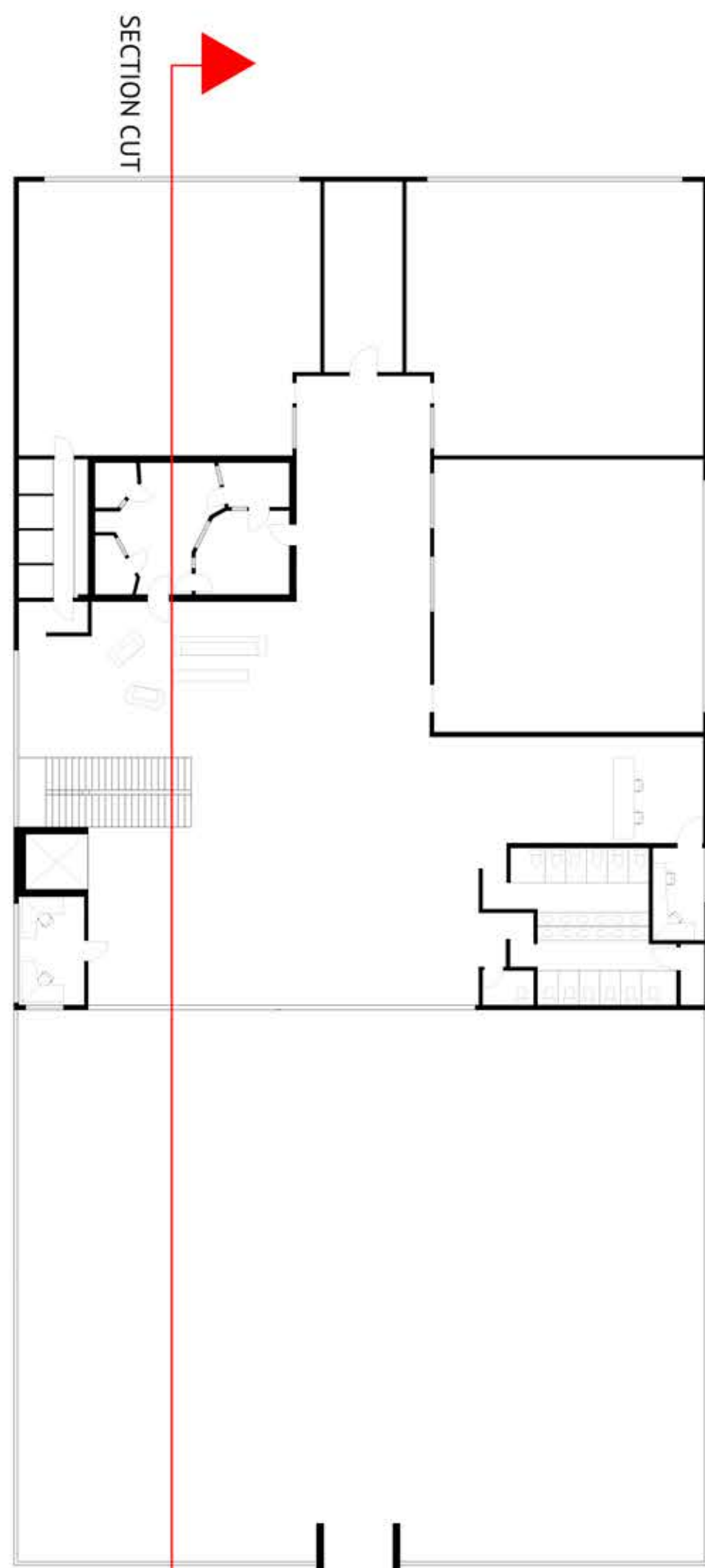
A PLACE TO BE STORY TO TELL VOICE TO HEAR



SECTION



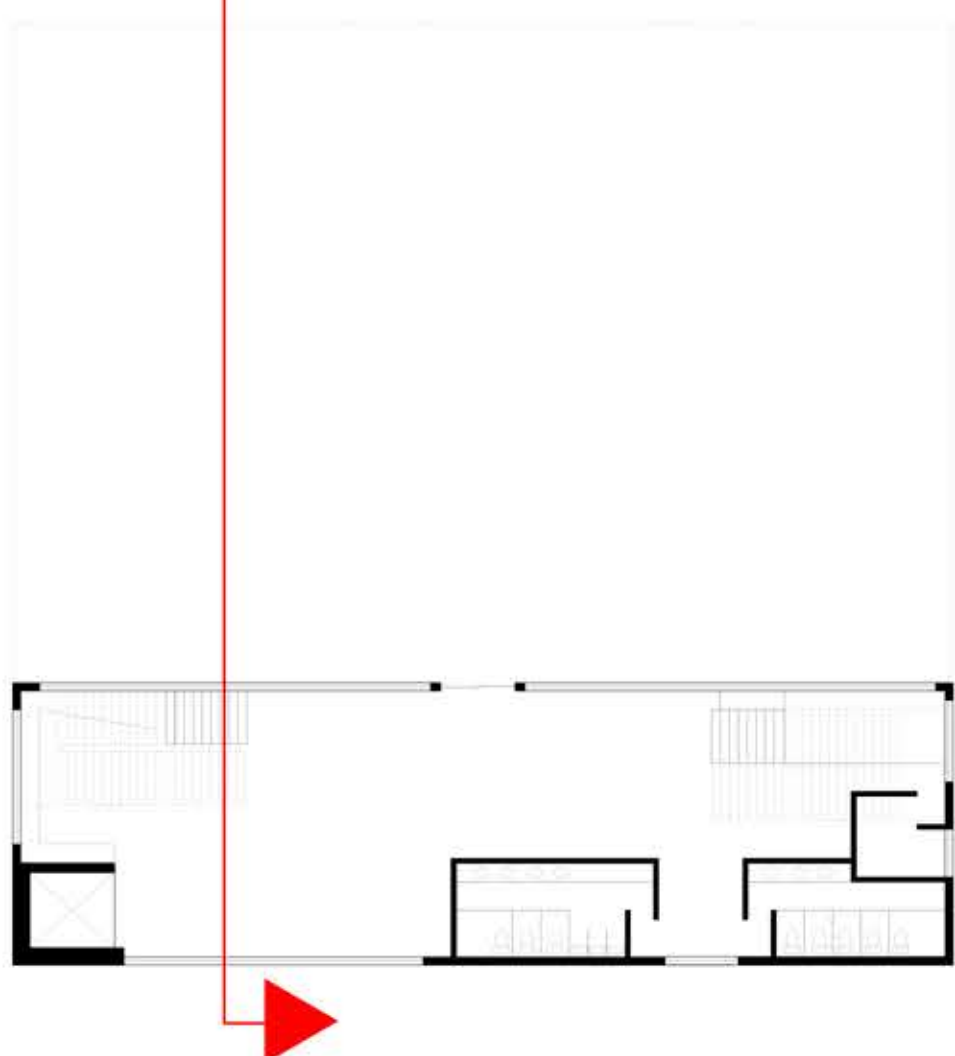
First Floor Plan



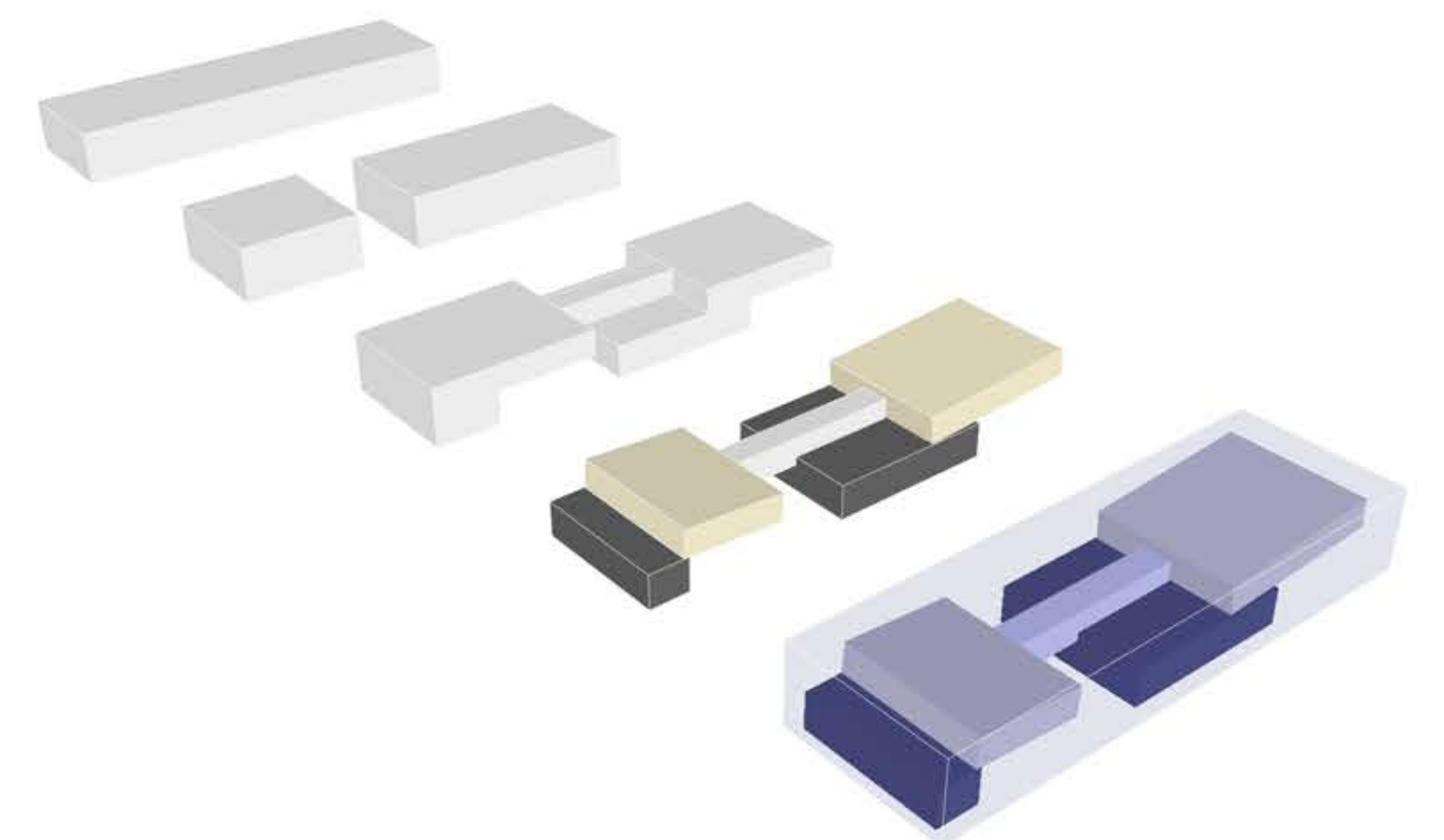
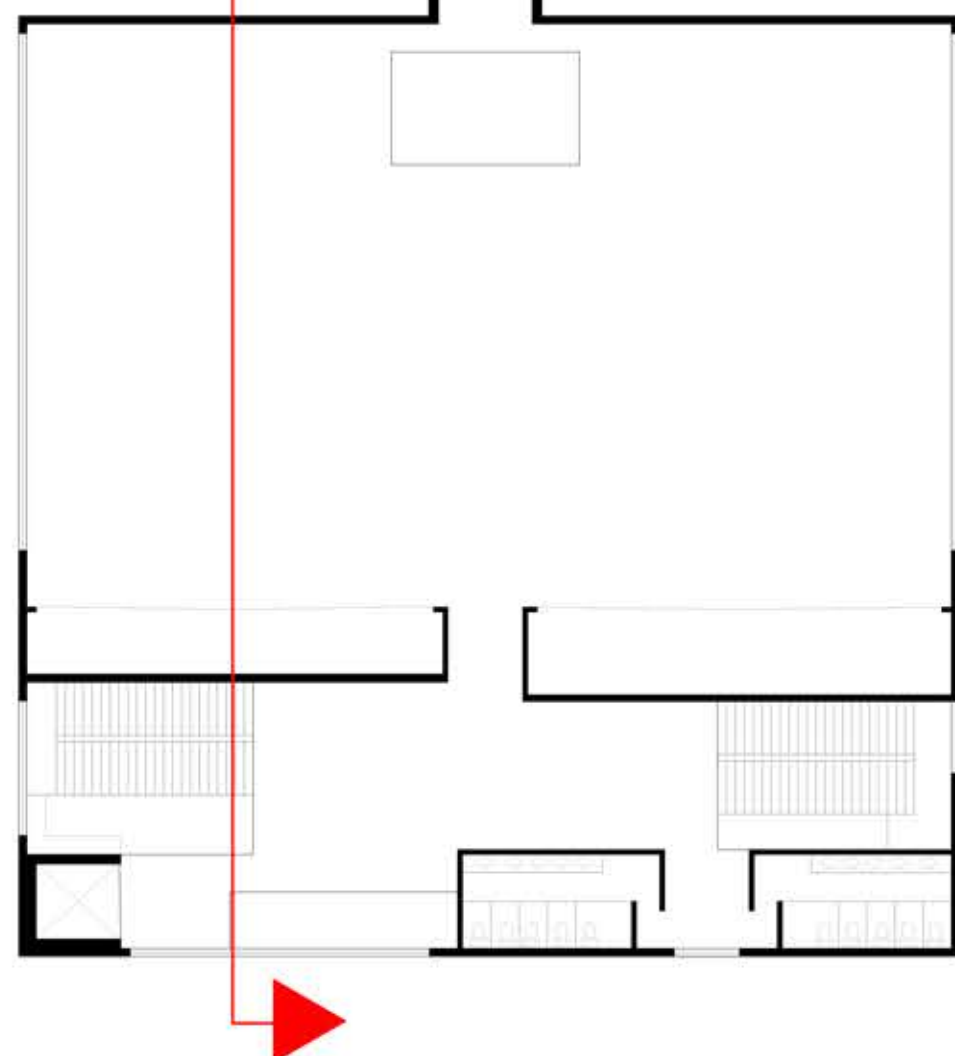
SECTION CUT



Interior perspective



Second Floor Plan



Spatial Concept Diagram



Scale: 1" = 20'

